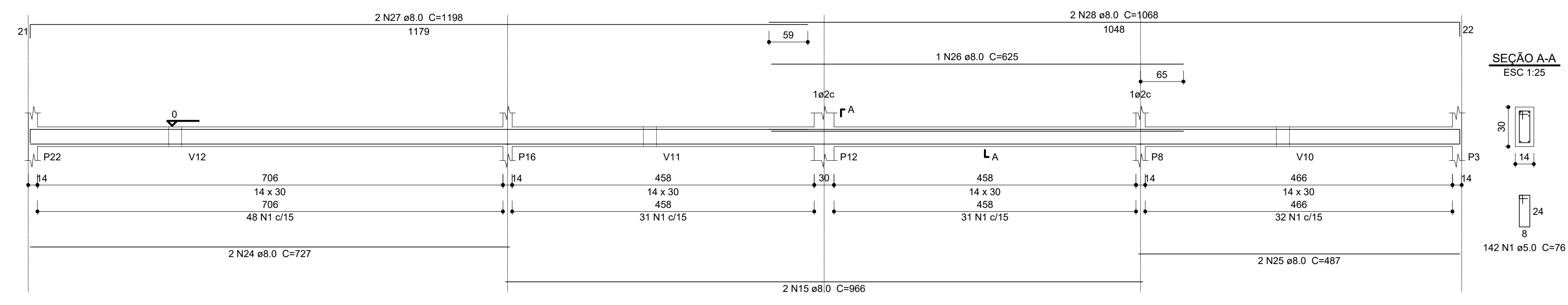
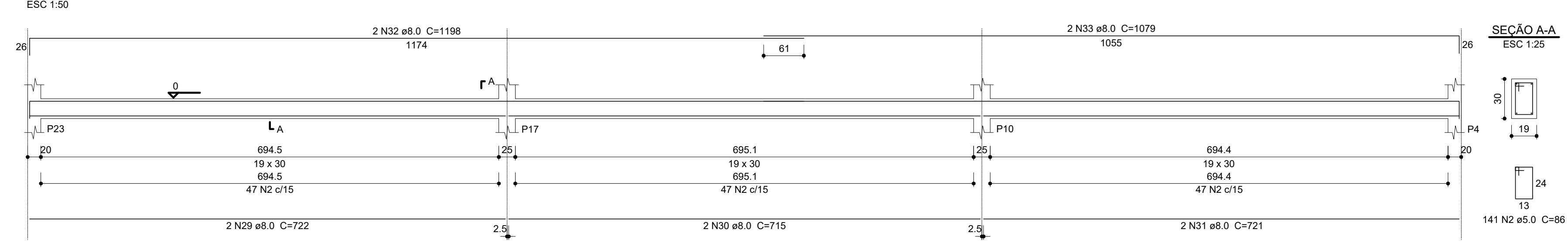


Vigas Baldrames

V8
ESC 1:50

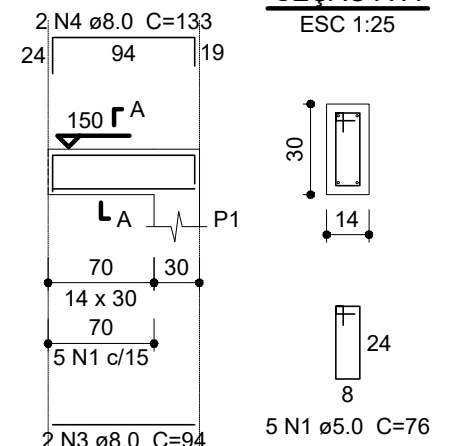


V9
ESC 1:50

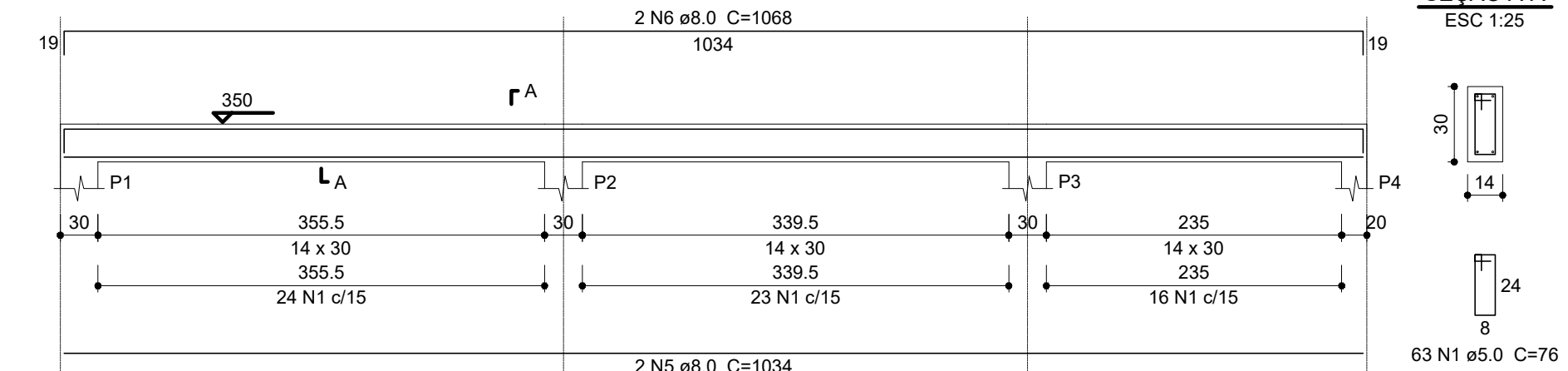


Vigas

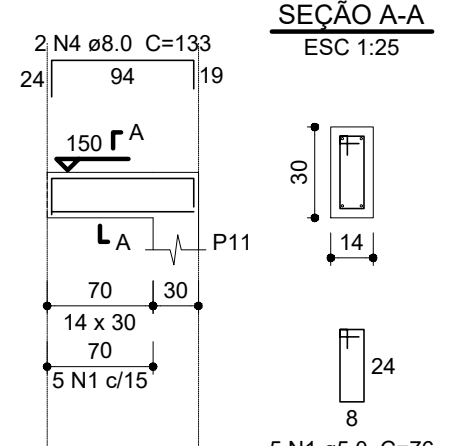
V1
ESC 1:50



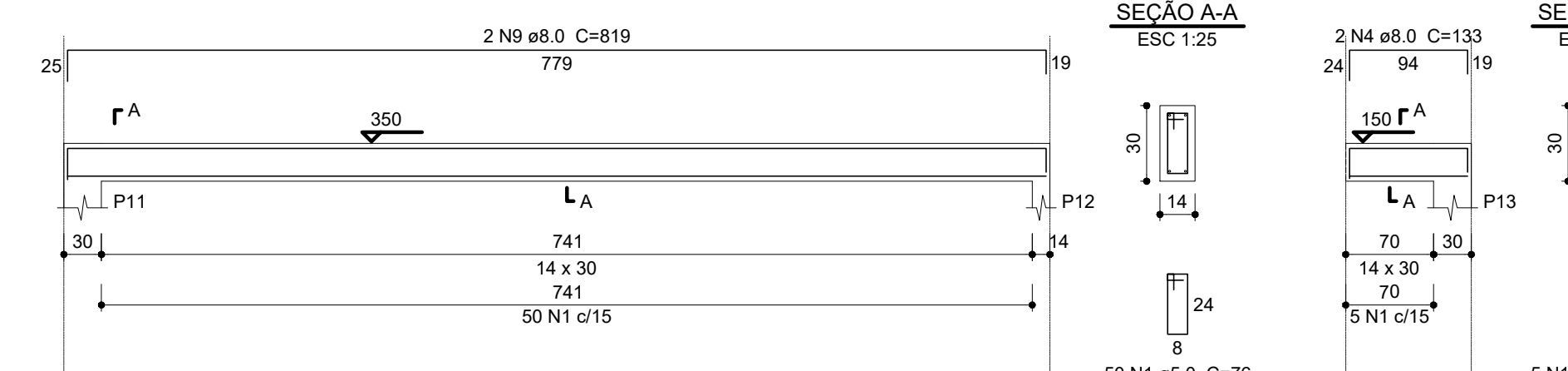
V2
ESC 1:50



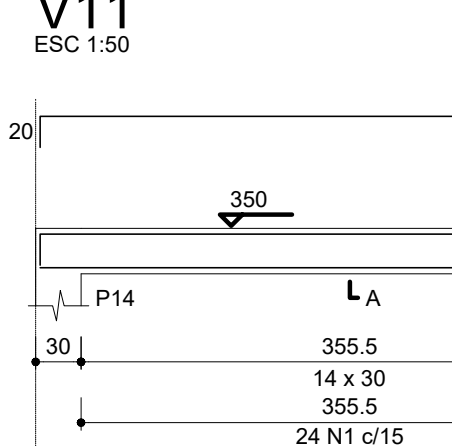
V7
ESC 1:50



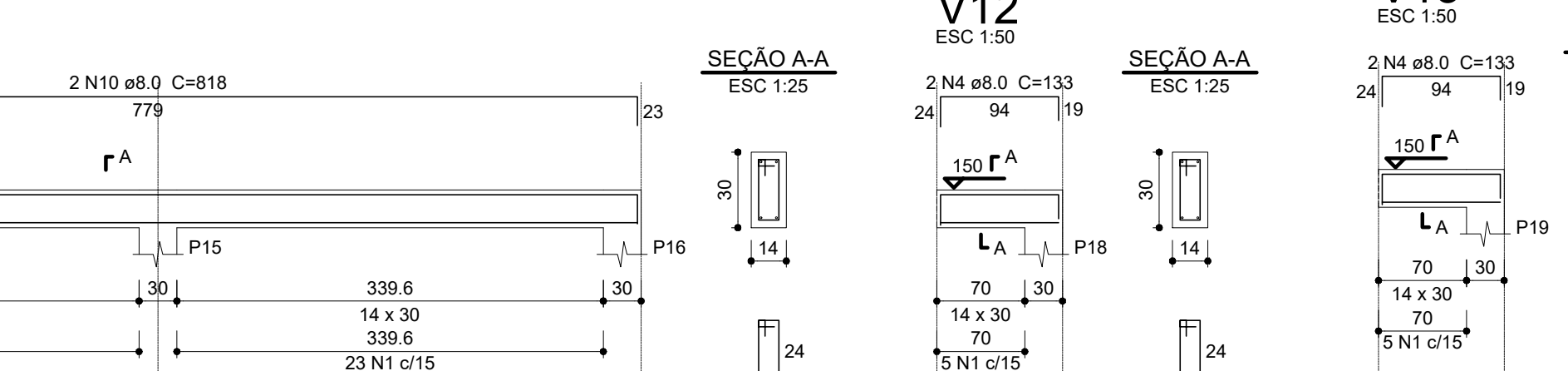
V8
ESC 1:50



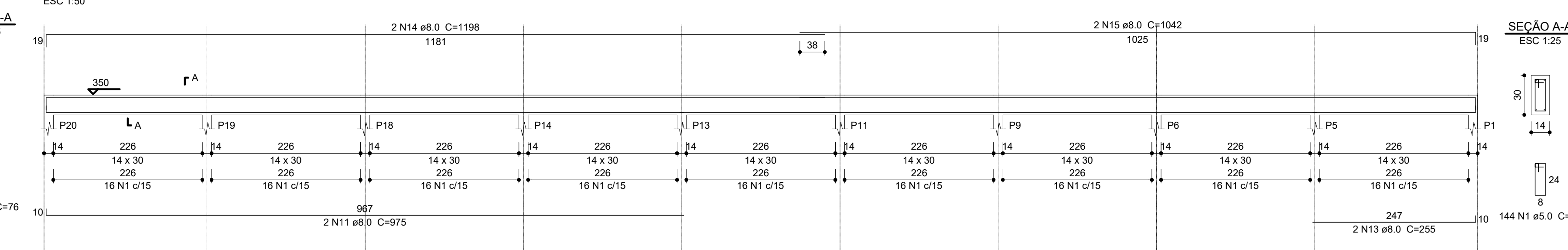
V11
ESC 1:50



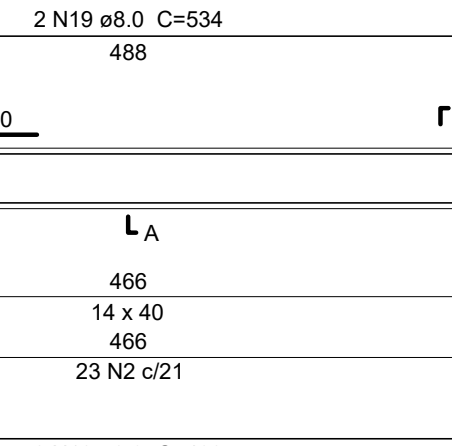
V12
ESC 1:50



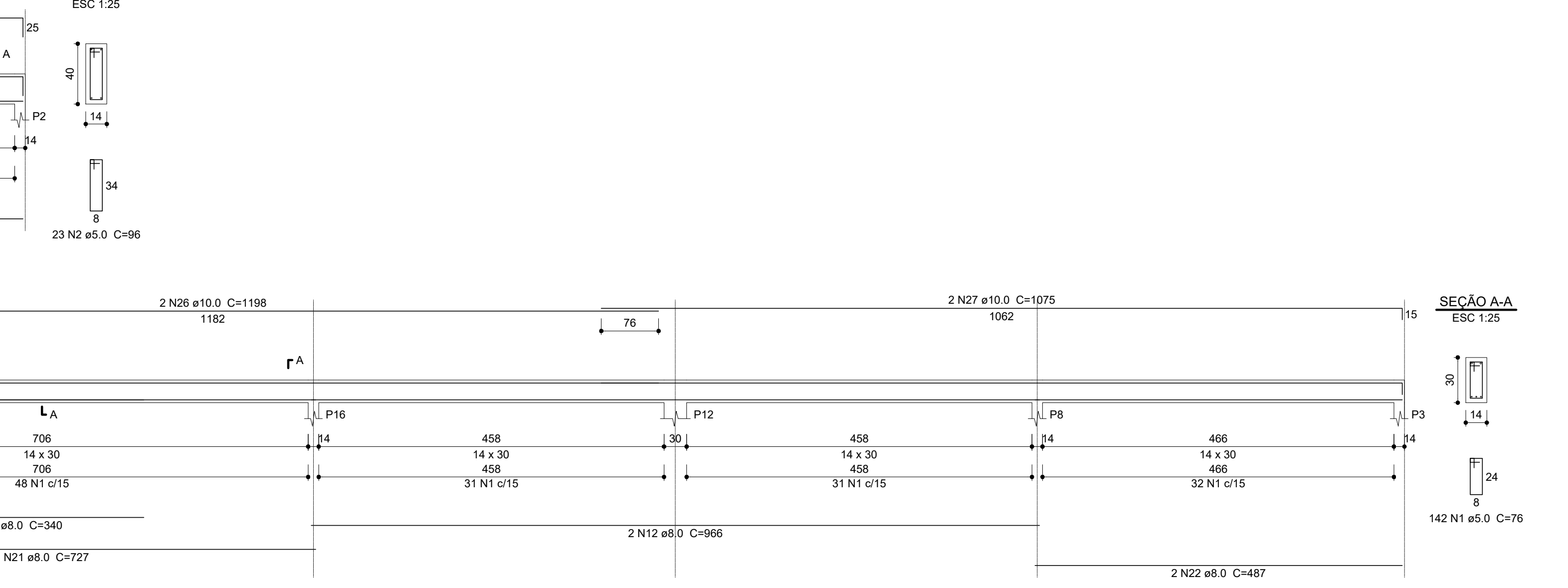
V16
ESC 1:50



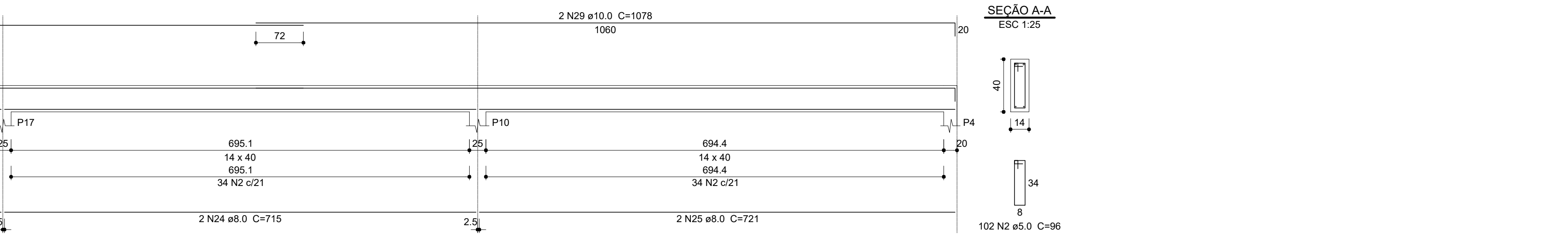
V18
ESC 1:50



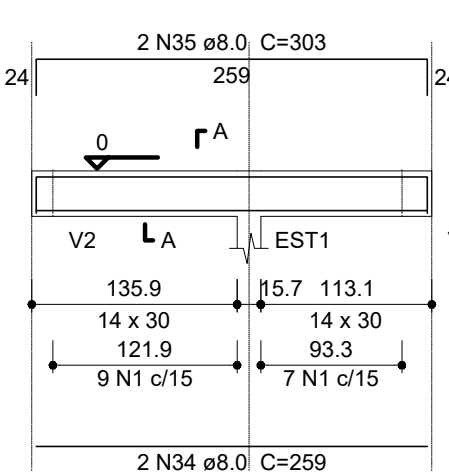
V19
ESC 1:50



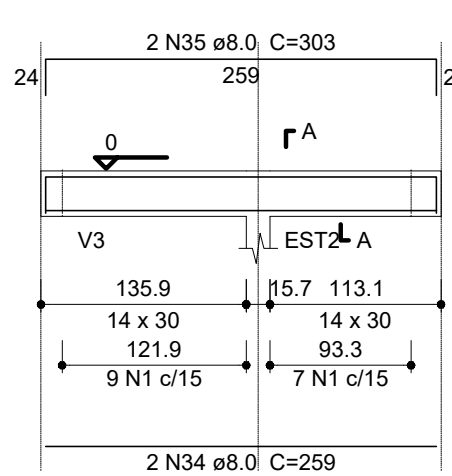
V20
ESC 1:50



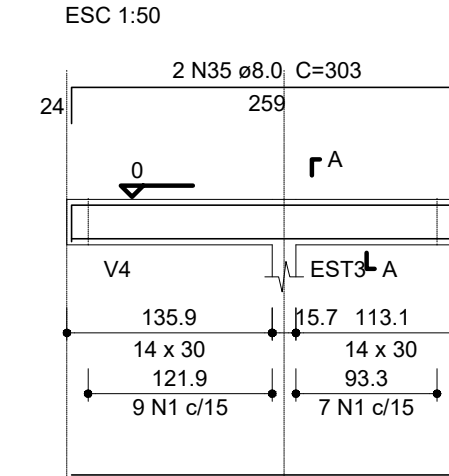
V10
ESC 1:50



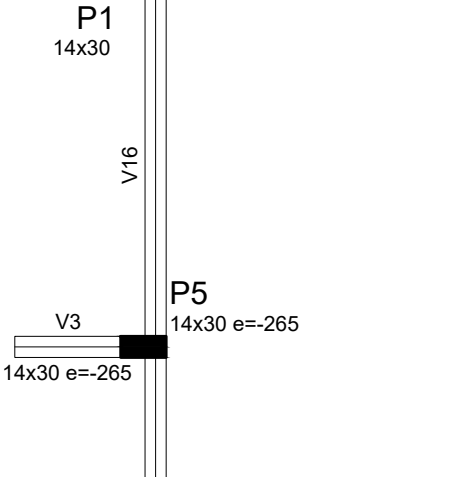
V11
ESC 1:50



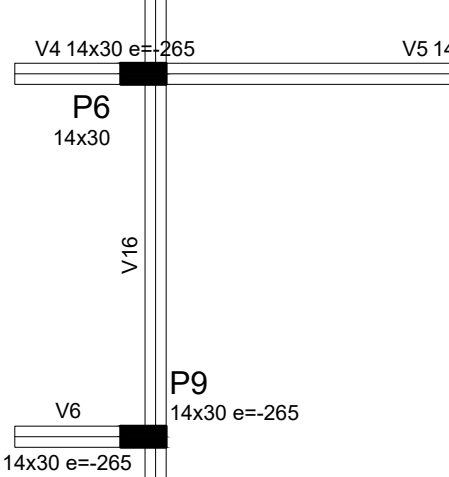
V12
ESC 1:50



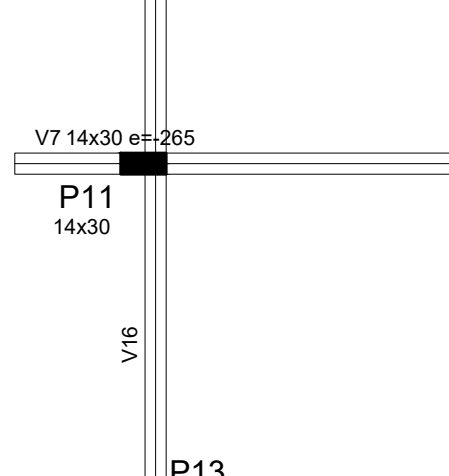
V15
ESC 1:50



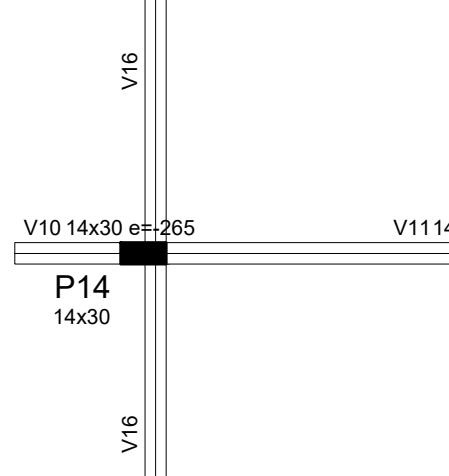
V17
ESC 1:50



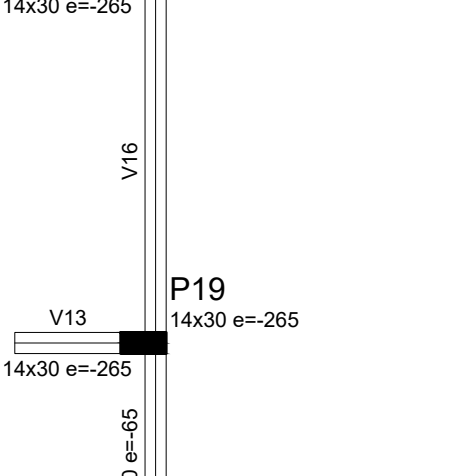
V18
ESC 1:50



V19
ESC 1:50



V20
ESC 1:50



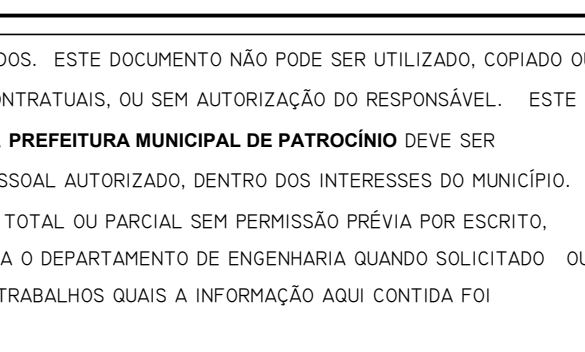
Relação do aço - VIGAS BALDRAMES					
AÇO	N	DIAM (mm)	QUANT (Barras)	UNIT (cm)	C.TOTAL (cm)
CA50	1	5.0	651	76	49476
CA50	2	5.0	141	86	12126
CA50	3	8.0	4	1034	4136
CA50	4	8.0	1	180	180
CA50	5	8.0	4	1050	4200
CA50	6	8.0	2	779	1558
CA50	7	8.0	1	185	185
CA50	8	8.0	1	107	107
CA50	9	8.0	2	787	1574
CA50	10	8.0	4	1037	4148
CA50	11	8.0	1	482	482
CA50	12	8.0	1	150	150
CA50	13	8.0	1	175	175
CA50	14	8.0	2	987	1974
CA50	15	8.0	4	966	3864
CA50	16	8.0	2	728	1456
CA50	17	8.0	2	1198	2396
CA50	18	8.0	2	1042	2084
CA50	19	8.0	2	728	1456
CA50	20	8.0	1	114	114
CA50	21	8.0	2	776	1552
CA50	22	8.0	2	488	976
CA50	23	8.0	2	522	1044
CA50	24	8.0	2	727	1454
CA50	25	8.0	2	487	974
CA50	26	8.0	1	625	625
CA50	27	8.0	2	1198	2396
CA50	28	8.0	2	1068	2136
CA50	29	8.0	2	722	1444
CA50	30	8.0	2	715	1430
CA50	31	8.0	2	721	1442
CA50	32	8.0	2	1198	2396
CA50	33	8.0	2	1079	2158
CA50	34	8.0	6	259	1554
CA50	35	8.0	6	303	1818

Resumo do aço			
AÇO	DIAM (mm)	C.TOTAL (m)	PESO + 10 % (kg)
CA50	8.0	526.4	228.5
CA50	5.0	618.1	104.4
PESO TOTAL (kg)			
CA50	228.5		
CA50	104.4		
Volume de concreto (C-25) = 5.56 m³			
Área de forma = 93.23 m²			

Relação do aço - VIGAS					
AÇO	N	DIAM (mm)	QUANT (Barras)	UNIT (cm)	C.TOTAL (cm)
CA50	1	5.0	607	76	46132
CA50	2	5.0	159	96	15264
CA50	3	8.0	20	94	1880
CA50	4	8.0	20	133	2660
CA50	5	8.0	4	1034	4136
CA50	6	8.0	1	180	180
CA50	7	8.0	6	779	4674
CA50	8	8.0	2	815	1632
CA50	9	8.0	2	815	1632
CA50	10	8.0	2	815	1632
CA50	11	8.0	2	970	1940
CA50	12	8.0	4	966	3864
CA50	13	8.0	2	510	1020
CA50	14	8.0	2	1198	2396
CA50	15	8.0	2	1042	2084
CA50	16	8.0	2	488	976
CA50	17	8.0	2	774	1548
CA50	18	8.0	2	488	976
CA50	19	8.0	2	534	1068
CA50	20	8.0	1	340	340
CA50	21	8.0	2	727	1454
CA50	22	8.0	2	487	974
CA50	23	8.0	2	722	1444
CA50	24	8.0	2	715	1430
CA50	25	8.0	2	721	1442
CA50	26	10.0	2	1198	2396
CA50	27	10.0	2	1075	2150
CA50	28	10.0	2	1198	2396
CA50	29	10.0	2	1076	2156

Resumo do aço			
AÇO	DIAM (mm)	C.TOTAL (m)	PESO + 10 % (kg)
CA50	8.0	454.7	197.3
CA50	10.0	91	61.7
CA50	5.0	614	104.1
PESO TOTAL (kg)			
CA50	259		
CA50	104.1		
Volume de concreto (C-25) = 6.01 m³			
Área de forma = 104.37 m²			

Características dos materiais			
TIPO	UNID	Valor	Valor
1	kg/cm³	2500	2500
2	kg/cm³	2500	2500
3	kg/cm³	2500	2500
4	kg/cm³	2500	2500
5	kg/cm³	2500	2500
6	kg/cm³	2500	2500
7	kg/cm³	2500	2500
8	kg/cm³	2500	2500
9	kg/cm³	2500	2500
10	kg/cm³	2500	2500
11	kg/cm³	2500	2500
12	kg/cm³	2500	2500
13	kg/cm³	2500	2500
14	kg/cm³	2500	2500
15	kg/cm³	2500	2500
16	kg/cm³	2500	2500
17	kg/cm³	2500	2500
18	kg/cm³	2500	2500
19	kg/cm³	2500	2500
20	kg/cm³	2500	2500
21	kg/cm³	2500	2500
22	kg/cm³	2500	2500
23	kg/cm³	2500	2500
24	kg/cm³	2500	2500
25	kg/cm³	2500	2500
26	kg/cm³	2500	2500
27	kg/cm³	2500	2500
28	kg/cm³	2500	2500
29	kg/cm³	2500	2500
30	kg/cm³	2500	2500
31	kg/cm³	2500	2500
32	kg/cm³	2500	2500
33	kg/cm³	2500	2500
34	kg/cm³	2500	2500
35	kg/cm³	2500	2500
36	kg/cm³	2500	2500
37	kg/cm³	2500	2500
38	kg/cm³	2500	2500
39	kg/cm³	2500	2500
40	kg/cm³	2500	2500
41	kg/cm³	2500	2500
42	kg/cm³	2500	2500
43	kg/cm³	2500	2500
44	kg/cm³	2500	2500
45	kg/cm³	2500	2500
46	kg/cm³	2500	2500
47	kg/cm³	2500	2500
48	kg/cm³	2500	2500
49	kg/cm³	2500	2500
50	kg/cm³	2500	2500
51	kg/cm³	2500	2500
52	kg/cm³	2500	2500
53	kg/cm³	2500	2500
54	kg/cm³	2500	2500
55	kg/cm³	2500	2500
56	kg/cm³	2500	2500
57	kg/cm³	2500	2500
58	kg/cm³	2500	2500
59	kg/cm³	2500	2500
60	kg/cm³	2500	2500
61	kg/cm³	2500	2500
62	kg/cm³	2500	2500
63	kg/cm³	2500	2500
64	kg/cm³	2500	2500
65	kg/cm³	2500	2500
66	kg/cm³	2500	2500
67	kg/cm³	2500	2500
68	kg/cm³	2500	2500
69	kg/cm³	2500	2500
70	kg/cm³	2500	2500
71	kg/cm³	2500	2500
72	kg/cm³	2500	2500
73	kg/cm³	2500	2500
74	kg/cm³	2500	2500
75	kg/cm³	2500	2500
76	kg/cm³	2500	2500
77	kg/cm³	2500	2500
78	kg/cm³	2500	2500
79	kg/cm³	2500	2500
80	kg/cm³	2500	2500
81	kg/cm³	2500	2500
82	kg/cm³	2500	2500
83	kg/cm³	2500	2500
84	kg/cm³	2500	2500
85	kg/cm³	2500	2500
86	kg/cm³	2500	2500
87	kg/cm³	2500	2500
88	kg/cm³	2500	2500
89	kg/cm³	2500	2500
90	kg/cm³	2500	2500
91	kg/cm³	2500	2500
92	kg/cm³	2500	2500
93	kg/cm³	2500	2500
94	kg/cm³	2500	2500
95	kg/cm³	2500	2500
96	kg/cm³	2500	2500
97	kg/cm³	2500	2500
98	kg/cm³	2500	2500
99	kg/cm³	2500	2500
100	kg/cm³	2500	2500



TÍTULO: PROJETO ESTRUCTURAL

USO: INSTITUCIONAL

DETALHE: PLANTAS DE FORMA PAV. BALDRAME E PAV. VIGAS, BALDRAMES E VIGAS

PROPRIETÁRIO: MUNICÍPIO DE PATROCÍNIO DOCUMENTO: CNPJ.: 18.468.033/0001-26

ENDEREÇO DO PROJETO: AVENIDA DOS JACARANDÁS ESQUINA COM AVENIDA DAS ACÁCIAS - BAIRRO MORADA NOVA

- PATROCÍNIO/MS

MAPA: R.T. PROJETO: ORLANDO VARGAS Assinatura de forma digital em

ORLANDO VARGAS Assinatura de forma digital em

DA SILVA Assinatura de forma digital em

NETO/07424291645 Assinatura de forma digital em

R.T. ELEVADO: R.T. ELEVADO: R.T. ELEVADO: R.T. ELEVADO: R.T. E